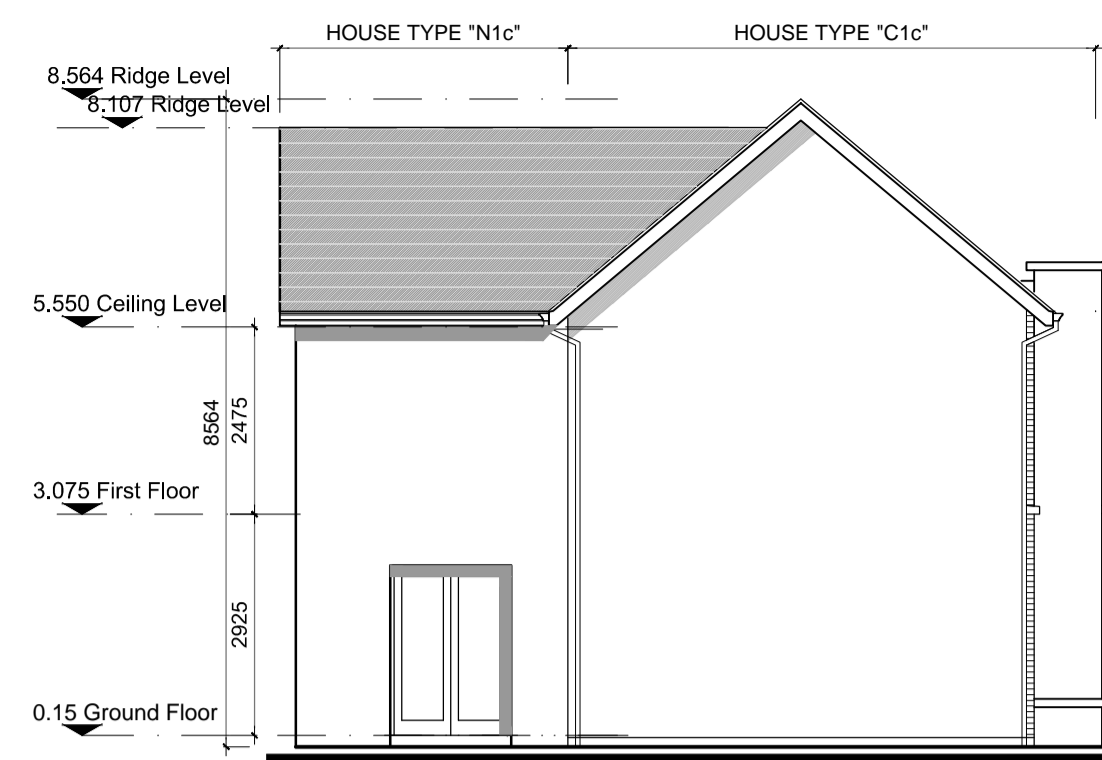
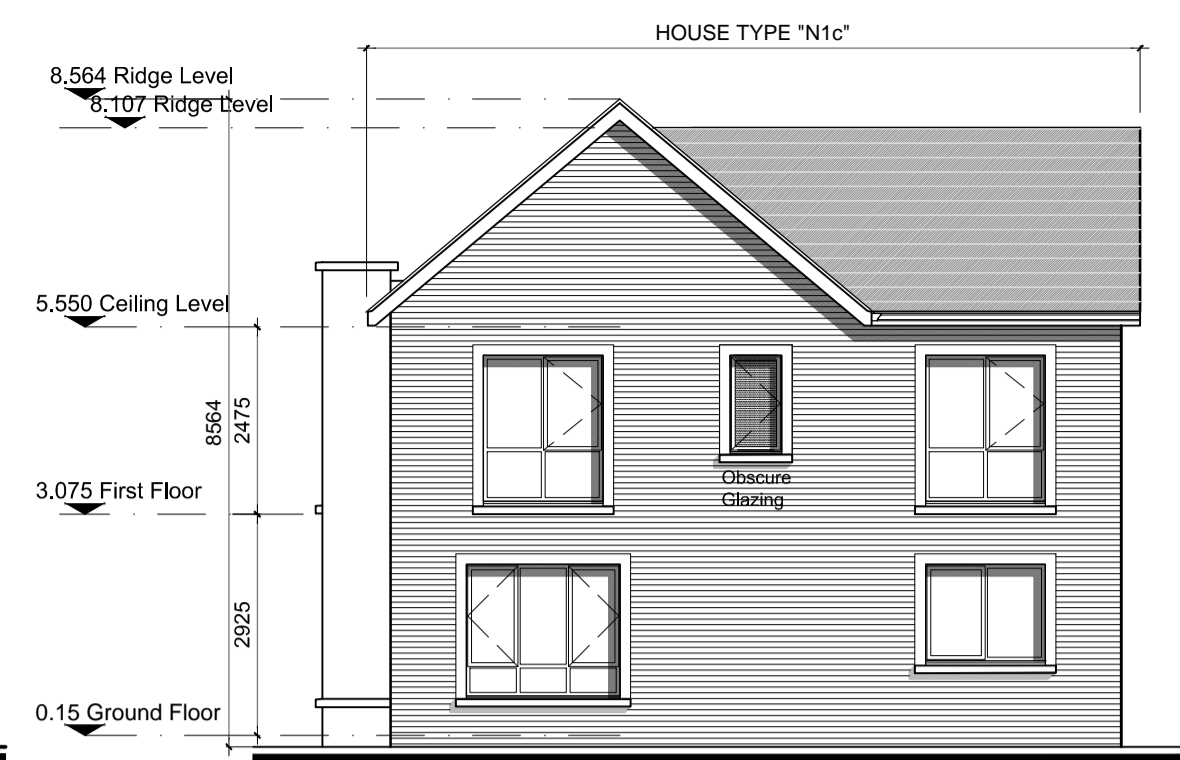




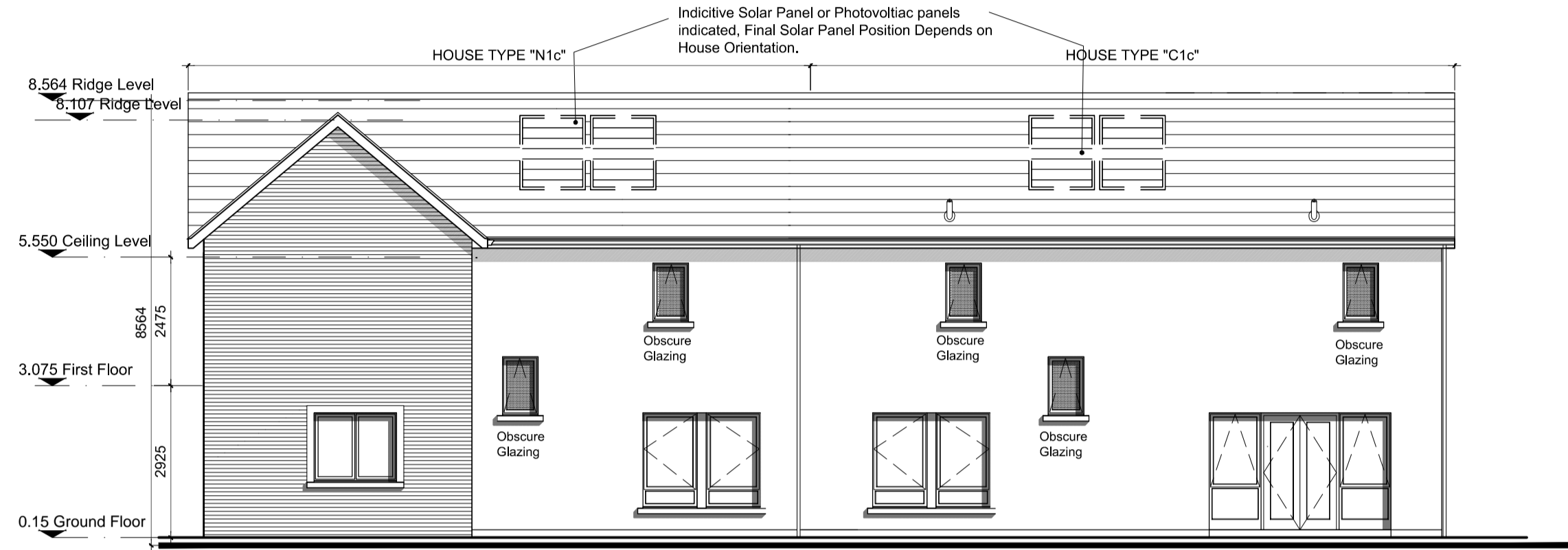
Front Elevation 'A'



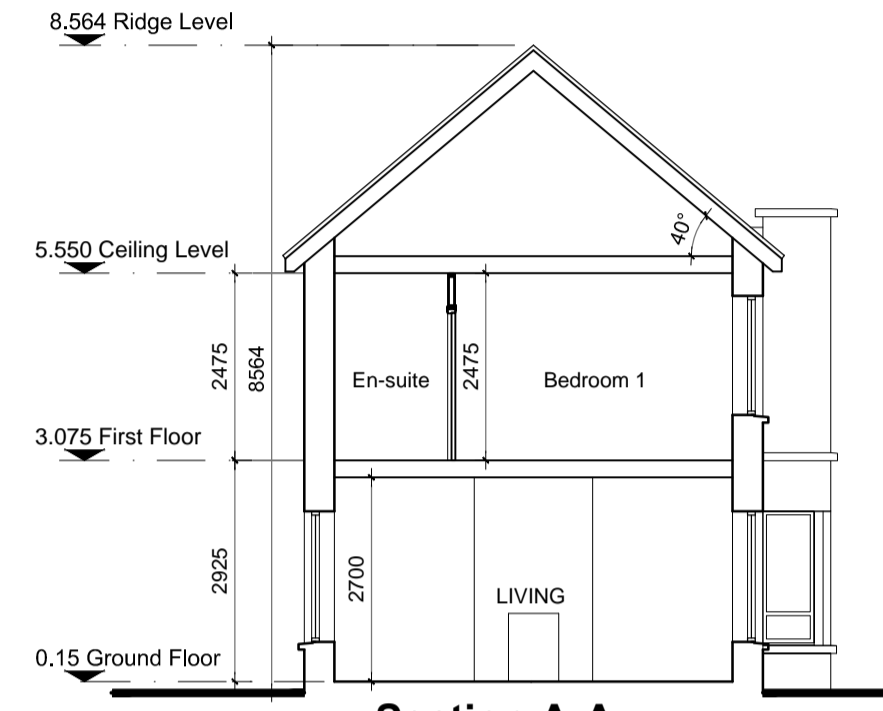
Side Elevation 'B'



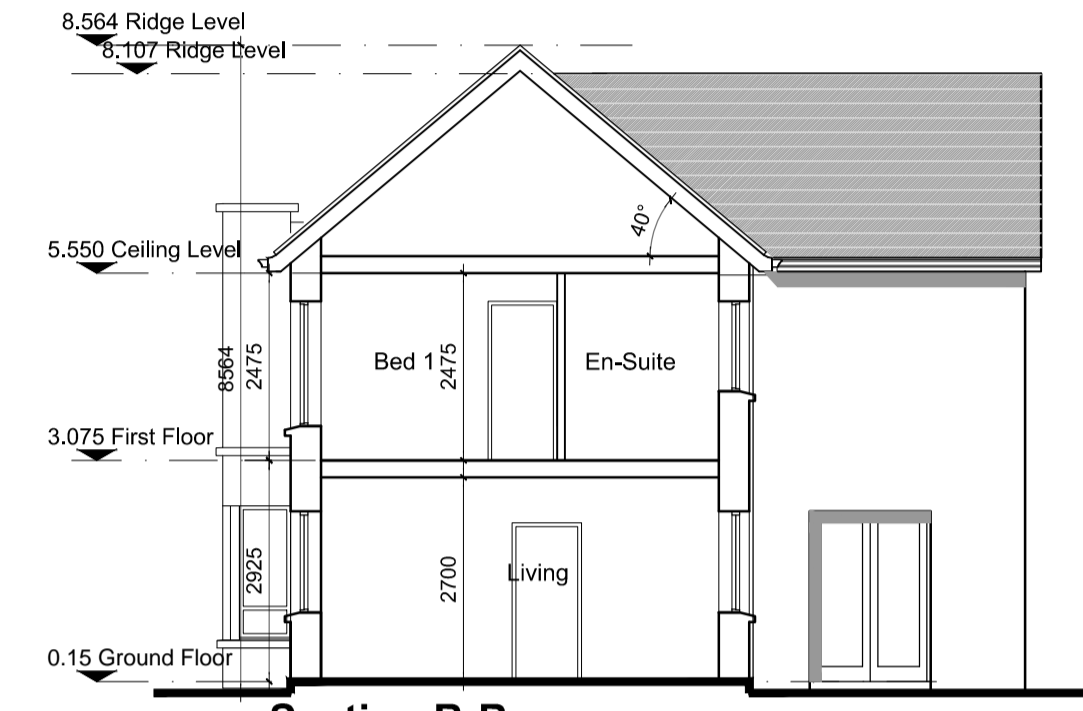
Side Elevation 'D'



Rear Elevation 'C'



Section A-A



Section B-B

**GENERAL NOTES**

THIS DRAWING TO BE READ IN CONJUNCTION WITH ARCHITECT'S DRAWINGS, CONSULTANT ENGINEER'S DRAWINGS AND SPECIFICATIONS & LANDSCAPE ARCHITECT'S DRAWINGS  
REFER TO ARCHITECT'S SITE PLAN PL002 and PL003 FOR NORTH ORIENTATION.

LEVELS GIVEN ON HOUSE TYPE DRAWINGS ARE GIVEN TO A LOCAL ABSOLUTE ZERO LEVEL. FOR SPECIFIC LEVELS DEPENDING ON INDIVIDUAL UNIT LOCATION, REFER TO ARCHITECT'S CONTEXT SECTIONS AND ENGINEER'S DRAWINGS WHERE LEVELS ARE ALL GIVEN IN RELATION TO LAND SURVEYOR'S BENCHMARK BASED ON MALIN HEAD DATUM LEVEL.

REFER TO SITE LAYOUT PLAN FOR NORTH ORIENTATION  
REFER TO CONSULTING ENGINEERS DRAWINGS FOR BLOCK LEVELS

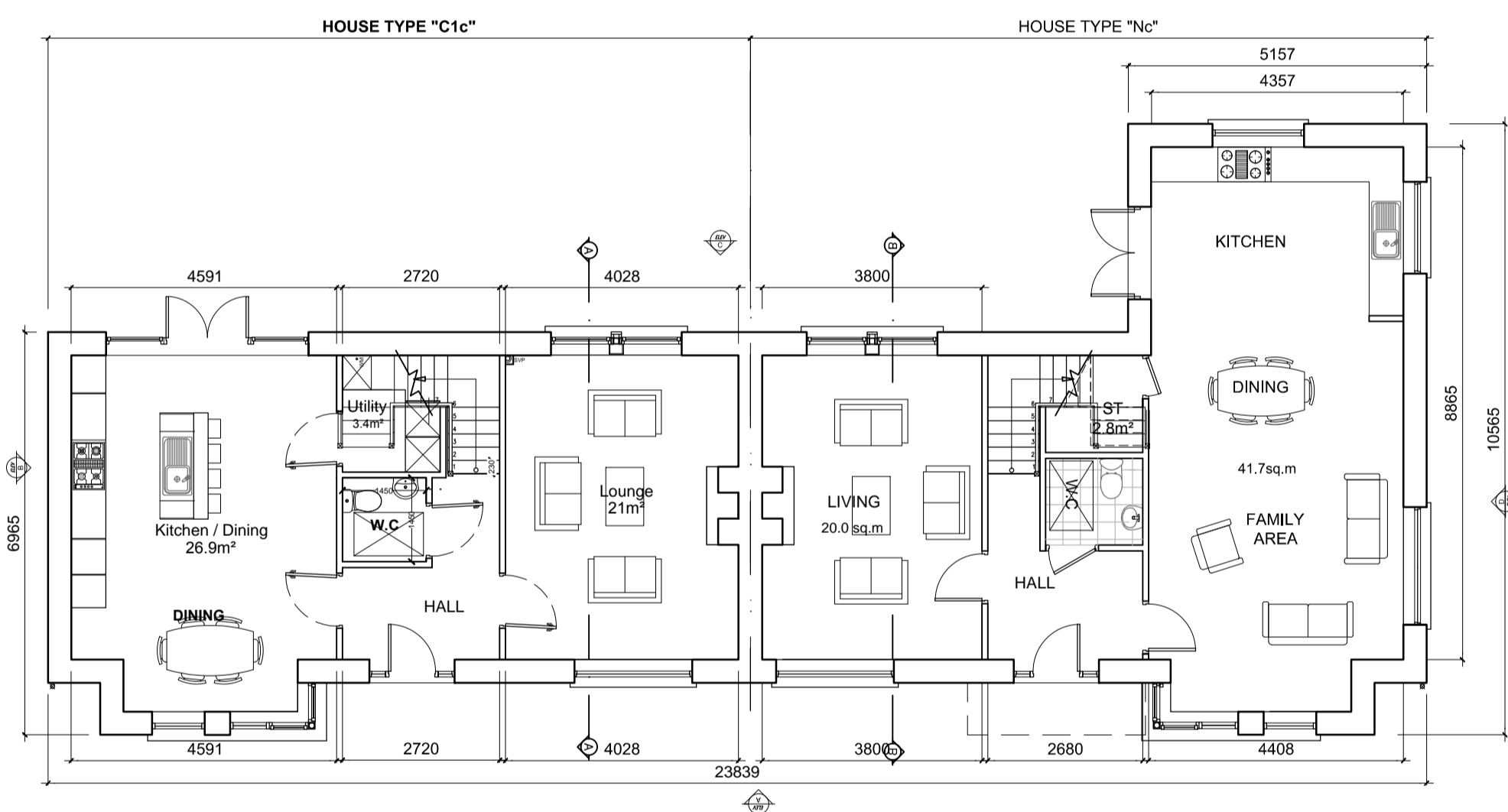
**NOTES ON FINISHES:**

ROOF: TO BE FINISHED IN SLATE OR CONCRETE ROOF TILES IN SELECTED COLOUR OR SIMILAR APPROVED.  
WALLS: SELECTED CLAY BRICKWORK WHERE INDICATED OTHERWISE PAINTED SAND / CEMENT RENDER OR SELF COLOURED RENDER OR DRY-DASH TO CONCEALED SIDE GABLES.

JOINERY: ALL WINDOWS AND DOORS, FRAMES AND LEAVES, TO BE ALUMINIUM POWDER-COATED TO APPROVED COLOUR OR uPVC OR PAINTED TIMBER TO APPROVED COLOUR, OBSCURE GLAZING WHERE INDICATED TO SENSITIVE WINDOWS.

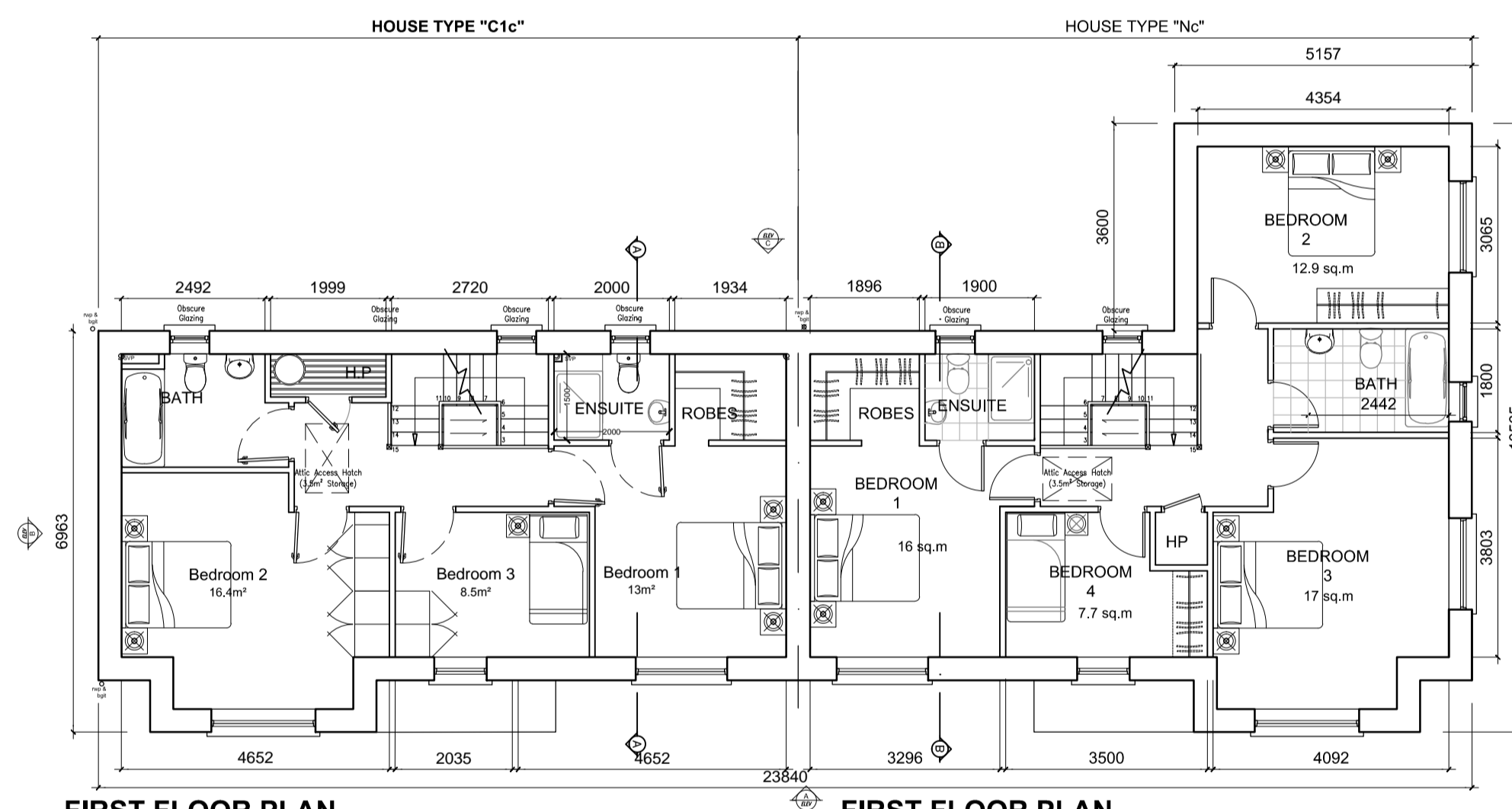
RAINWATER GOODS: GUTTERS, DOWNPIPES, AND FIXINGS TO BE uPVC OR ALUMINIUM POWDER COATED TO SELECTED COLOUR TO MATCH ROOF SLATES

\* SOLAR PANELS: INDICATIVE SOLAR PANEL POSITION, FINAL SOLAR PANEL POSITION DEPENDS ON HOUSE ORIENTATION. THE SOLAR PANELS SHOWN ARE A PROVISIONAL OPTION TO SATISFY RENEWABLE ENERGY REQUIREMENTS OF BUILDING REGS PART L. SOLAR PANELS MAY BE OMITTED IN FAVOUR OF ALTERNATIVE RENEWABLE ENERGY SOURCE.



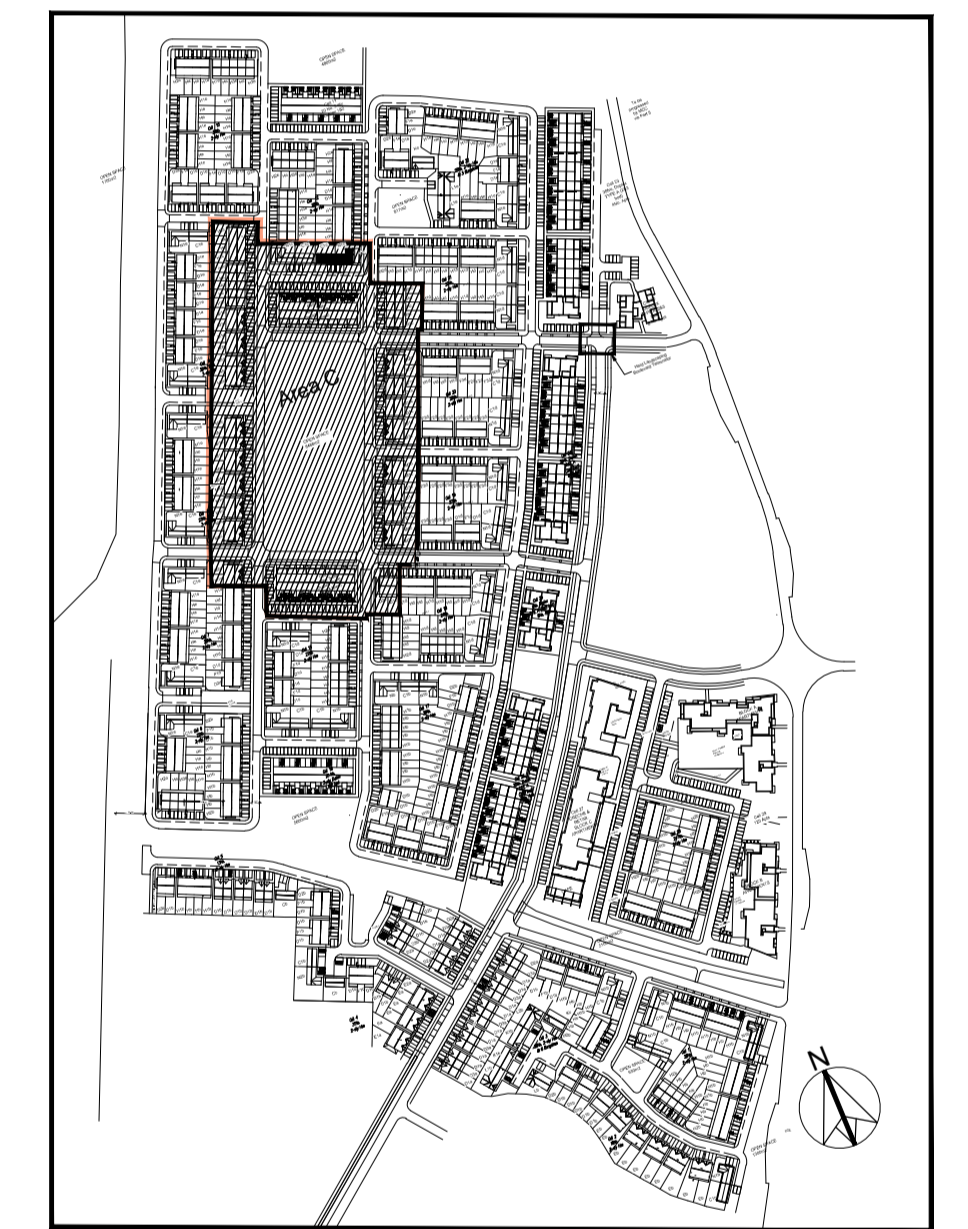
**GROUND FLOOR PLAN**  
House Type C1c - Semi Detached  
AREA 63.4m<sup>2</sup> / 682.43 ft<sup>2</sup>  
O/ALL AREA 126.8m<sup>2</sup> / 1364ft<sup>2</sup>

**GROUND FLOOR PLAN**  
House Type N1c - Semi Detached  
AREA 76.7m<sup>2</sup> / 796 ft<sup>2</sup>  
O/ALL AREA 153.4m<sup>2</sup> / 1651ft<sup>2</sup>

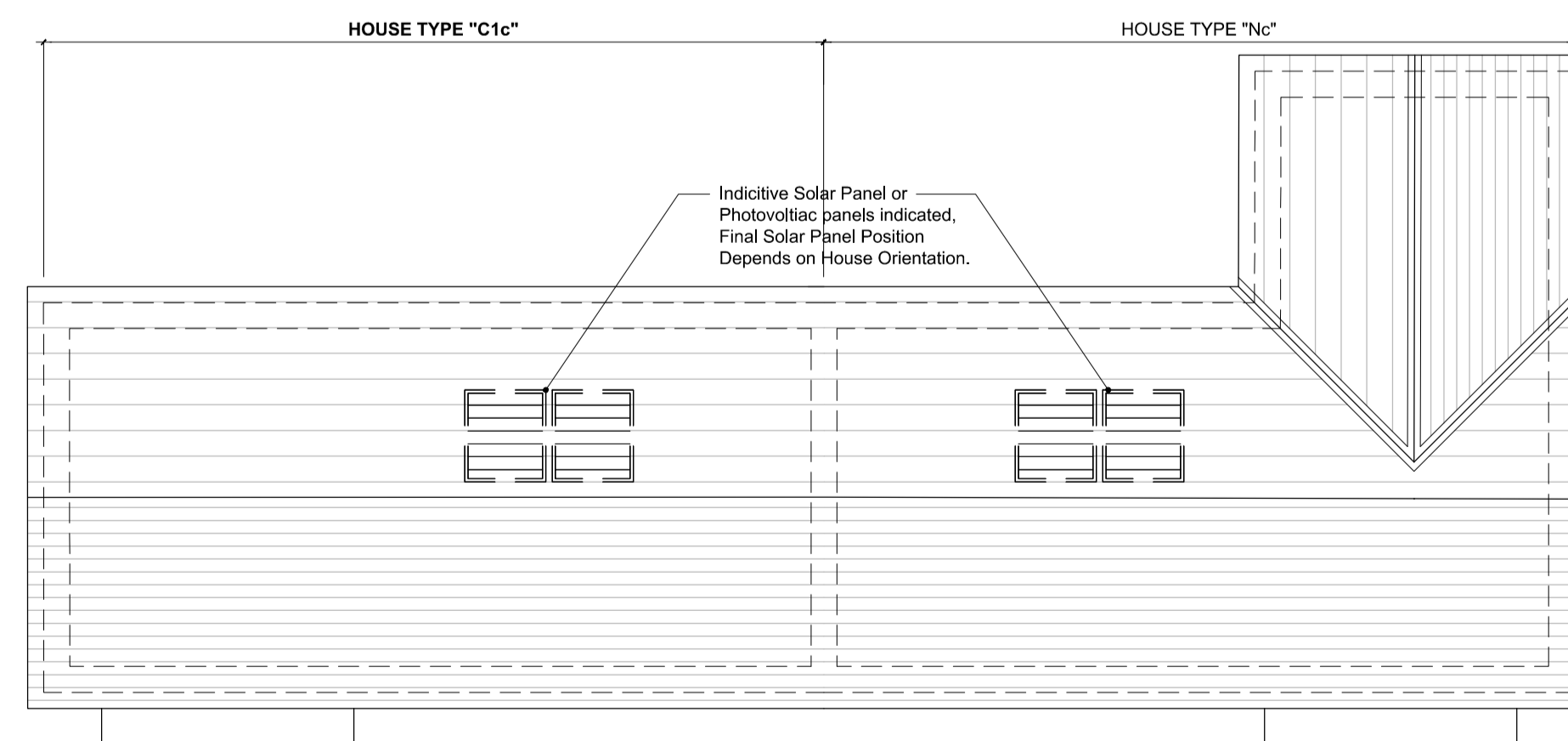


**FIRST FLOOR PLAN**  
House Type C1c - Detached  
AREA 63.4m<sup>2</sup> / 353 ft<sup>2</sup>

**FIRST FLOOR PLAN**  
House Type N1c - Semi Detached  
AREA 76.7m<sup>2</sup> / 796 ft<sup>2</sup>



KEY PLAN - NTS



ROOF PLAN

**Character Area C**

<b>N1c Right entry</b>	HOUSE TYPE N1c	Semi-detached
	2 STOREY	153.4 m <sup>2</sup> / 1,651ft <sup>2</sup>
	4 BED	No of Units: 01

<b>C1c Left entry</b>	HOUSE TYPE C1c	Semi-detached
	2 STOREY	126.8 m <sup>2</sup> / 1,364ft <sup>2</sup>
	4 BED	No of Units: 01

**NOTES:**

DO NOT SCALE FROM DRAWINGS. WORK TO FIGURED DIMENSIONS ONLY. ARCHITECT TO BE NOTIFIED OF ALL DISCREPANCIES.

REVISIONS		
DATE	DESCRIPTION	No.

<p>M: CROSSAN O'ROURKE MANNING ARCHITECTS</p>	PROJECT TITLE:	Dunshaughlin East SHD	DATE:	Dec'18	DRAWN BY:	DB
	DRAWING TITLE:	House Type C1c/N1c	SCALE:	1:100@A1	REVISION:	
		Plans, Elevations, & Section	JOB NO:	16028.1SHD122	DRAWING NO:	